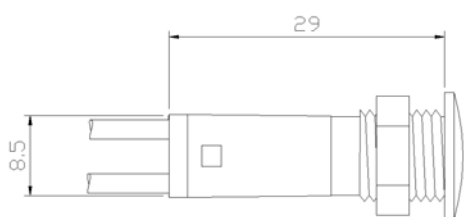


**TYPE SC
MOD. SC-7-10F**

SEGNALATORE PER FORO Ø 10mm. BLOCCAGGIO A PANNELLO TRAMITE DADO

SELF LOCKING SIGNAL LAMP FOR HOLE Ø 10mm. LOCKING TO THE PANEL BY NUT



SC-7-10F

<p>TENSIONE Da 2V a 400V LAMPADA neon; fluoro; incandescenza; LED TEMPERATURA 90°C; 120°C, 150°C. TIPO CAVO silicone; vetro silicone; pvc TERMINALI A richiesta</p> <p>APPROVAZIONI UL-CSA – VDE - CE</p>	<p>VOLTAGE From 2V to 400V LAMP Neon; fluorescent; incandescence; LED TEMPERATURE 90°C; 120°C, 150°C. WIRES silicone; glass fiber silicone; pvc TERMINALS Upon request</p> <p>APPROVALS UL-CSA – VDE - CE</p>
---	---

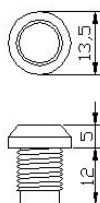
-Questo segnalatore può essere fornito con lente montata o separata e con cavetteria aggiuntiva.

Dado fornito separato

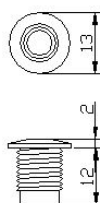
-This signal lamp can be supplied with lens mounted or separated and with additional wires

Nut supplied separately

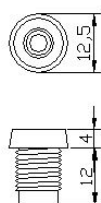
**LENTI
LENSES**



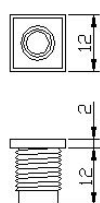
10F1



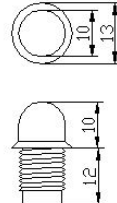
10F2



10F3



10F4



10F5



10F6



10F7

