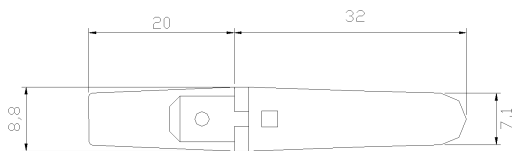


**TYPE F**

**MOD. F-2**

**SEGNALATORE CONICO CAPSULA 32mm CON FASTON MASCHIO**  
**CONICAL SIGNAL LAMP 32mm WITH MALE FASTON CLUTCH**



F-2

<p><b>TENSIONE</b> Da 2V a 400V <b>LAMPADA</b> neon; fluoro; incandescenza; LED <b>TEMPERATURA</b> 90°C; 120°C, 150°C. <b>TERMINALI</b> Faston maschio 6x3x0,8 o 4,8x0,8</p> <p><b>APPROVAZIONI</b> UL-CSA - VDE - CE</p>	<p><b>VOLTAGE</b> From 2V to 400V <b>LAMP</b> Neon; fluorescent; incandescence; LED <b>TEMPERATURE</b> 90°C; 120°C, 150°C. <b>TERMINALS</b> Male faston 6x3x0,8 or 4,8x0,8</p> <p><b>APPROVALS</b> UL-CSA - VDE - CE</p>
---	--

**-Questo segnalatore può essere fornito con cavetteria aggiuntiva**  
**-This signal lamp can be supplied with additional wires**

